

*Holton Run*

# THE STILLWATER



STILLWATER R

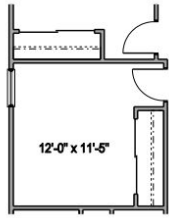


STILLWATER S

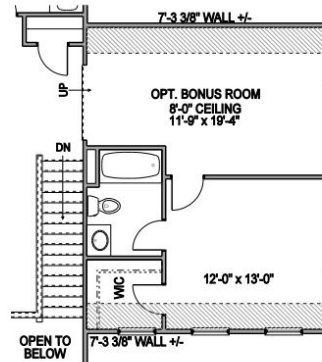
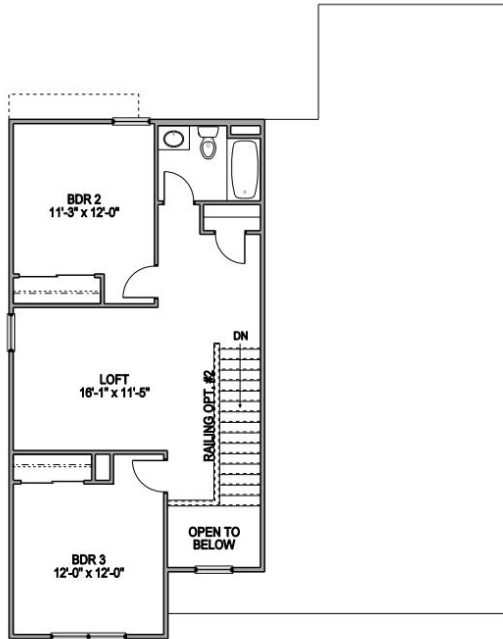
**Holton Run** proudly offers high-quality, single-family homes that are the perfect place to call your own! Our homes are nestled on the South-Western City School District, just minutes from I- 270, in the South Western City school district. Our new construction homes are built to last with emphasis on YOU! Choose from our collection of ranch, two-story and multi-level floorplans that offer a variety of high-end standard finishes and design options to create a home that is uniquely yours. Our high-quality materials and thoughtful designs offer energy-efficient, comfortable living with a 30-year structural warranty.

  
**Schottenstein**  
Homes

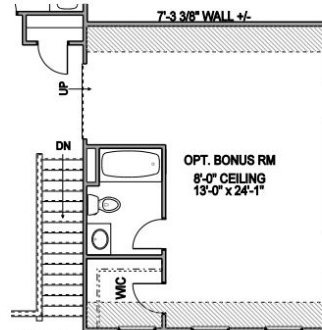
614.478.1100 | [SchottensteinHomes.com](https://www.SchottensteinHomes.com)



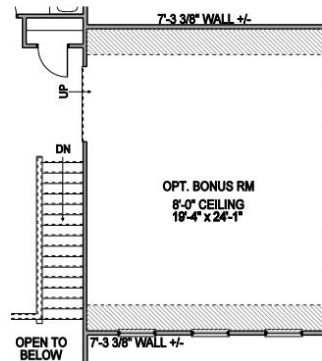
OPT. BDR 4



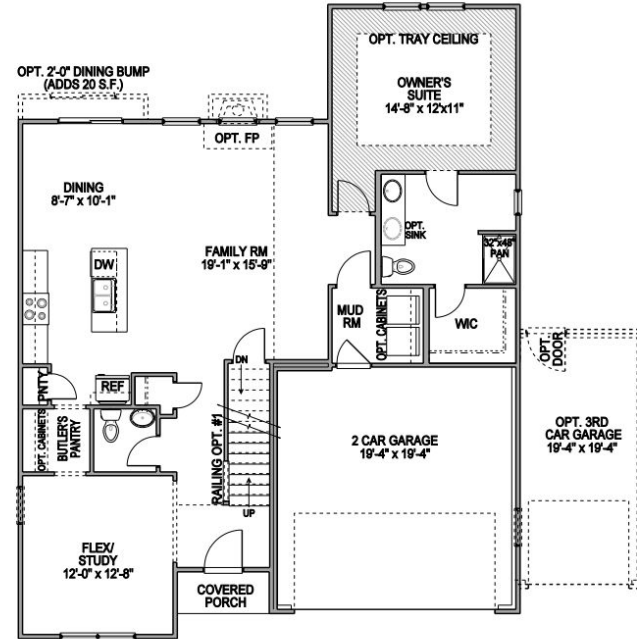
OPT. BONUS RM W/ BDR 5  
(ADDS 486 S.F.)



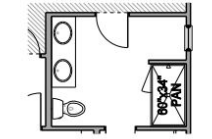
OPT. BONUS RM W/ BATH/CLOSET  
(ADDS 486 S.F.)



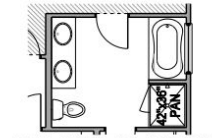
OPT. BONUS RM  
(ADDS 486 S.F.)



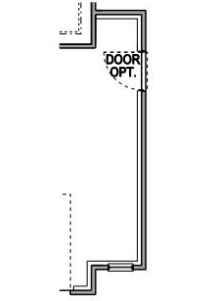
ELEVATION C / E



OPT. OWNERS BATH #1



OPT. OWNERS BATH #2



OPT. 4'-0" GARAGE BUMP